



1. **PATENT TRACT NAME REGISTERS**

<http://www.phmc.state.pa.us/bah/dam/rg/di/r17-158TractNameIndexes/r17-158TractIndMainInterface.htm>

Patent Tract Name Registers – Main Page

Patent Tract Name Registers are arranged by Volume for inclusive years listed – each volume containing those years consecutive Patent Books [A# – AA# – P#].

Each Patent Tract Name Volume is arranged by the first letter of Patent Tract Name

.....

Information in Patent Tract Name Index:

- Where Enrolled [Book / page] = Patent Books P# listed on Patent Tract Name] Register – Main Page
- = “Where Recorded” [Book / Page] recorded in Patent [Surname] Register entry & on Main Page
- = “Where Recorded” [Book / Page] recorded in Warrantee Resister entry & on Main Page

Warrantee	Date of Warrant
Patentee	Date of Patent
Name of Tract & area	
County / Township	

~~~~~

2. **PATENT [SURNAME] REGISTERS**

<http://www.phmc.state.pa.us/bah/dam/rg/di/r17PatentIndexes/r17-PatentIndexMainInterface.htm>

Patent [Surname] Indexes – Main Page

Patent [Surname]Index are arranged by Volume for inclusive years listed– each volume contains those years Patent Books [P# – P#] or [H#-H#].

Each Patent [Surname] Index Volume is arranged:

- [1] by first letter of patentee's surname. All the "A"s are listed together in order of Patent Book [P# or H#]; then the "B"s are listed together in order of Patent Book [P# or H#], then the "C"s , etc.

- [2] Within each alphabetical– Patent Book [P#] subset entries are finally arranged by date of patent.

.....

Information in Patent [Surname] Register::

- Patent Book / Page → Patent Index Book P# / H# listed on Patent [Surname] Registers – Main Page
- = “Where Enrolled” [Book / Page] recorded in Patent Tract Name Resister entry & on Main Page
- = “Where Recorded” [Book / Page] recorded in Warrantee Resister entry & on Main Page

|                      |                 |
|----------------------|-----------------|
| Warrantee            | Date of Warrant |
| Patentee             | Date of Patent  |
| Name of Tract & area |                 |
| County / Township    |                 |

~~~~~





C → D – I now look for WELSHONSE in the Patent Surname Indexes.

<http://www.phmc.state.pa.us/bah/dam/rg/di/r17PatentIndexes/r17-PatentIndexMainInterface.htm>  
Patent [Surname] Indexes – Main Page

o Volume 4, 1864-1903, surnames A-Z (for Patent Books H-61 through H-76)  
<http://www.phmc.state.pa.us/bah/dam/rg/di/r17PatentIndexes/r17-155PatIndH4Interface.htm>

Daniel Welshons → Volume 4 → 'W' → page 372 → Patent Book H64 page 623  
<http://www.phmc.state.pa.us/bah/dam/rg/di/r17PatentIndexes/H1864-1903PatentIndex372.pdf>

Book.	Page.	Patentee.	As.	Ps.	Warrantee.	DATE OF WARRANT.			
						MONTH.	DAY.	YEAR.	
H64	APR 29 1869 APR 02 1869	Haynes George	19	54	Joseph Kollenbringer	Oct	14	1745	Books
	APR 6 1870 623	Welshons Daniel	88	37	Arthur French	August	30	1785	Westmoreland

Warrantee: Arthur French      Date of Warrant: Aug 30, 1785      County: Westmoreland  
Patentee: Daniel Welshons      Date of Patent: April 6, 1870

E – I now look for Arthur French under Westmoreland county in the Warrantee Registers  
<http://www.phmc.state.pa.us/bah/dam/rg/di/r17-88WarrantRegisters/r17-88AllCountiesInterface.htm>  
Warrant Resisters – Main Page

o Under Westmoreland county  
<http://www.phmc.state.pa.us/bah/dam/rg/di/r17-88WarrantRegisters/WestmorelandPages/r17-88WestmorelandPageInterface.htm>

o Under Surnames beginning with 'F' ... I look for Date of Warrant: Aug 30, 1785

Arthur French → page 44; under Date of Warrant: Aug 30, 1785  
<http://www.phmc.state.pa.us/bah/dam/rg/di/r17-88WarrantRegisters/WestmorelandPages/Westmoreland44.pdf>

NO. OF WARRANT.	NAME OF WARRANTEE.	DESCRIPTION OF WARRANT.	QUANTITY.	DATE OF WARRANT.	DATE OF RETURN.	ACRES RETURNED.	NAME OF PATENTEE.	WHERE RECORDED.			WHERE SURVEY IS COPIED.	
								Vol.	No.	Page.	Book.	Page.
Ind. Co 80	French, Arthur	"	50.	30 " "	6 April 1870	88.37	Daniel Welshons	H	64	623	C57	178

Warrantee: Arthur French      Date of Warrant: Aug 30, 1785      County: Westmoreland  
Patentee: Daniel Welshons      Date of Patent: April 6, 1870

Where Recorded: Book H64; pg 623 ↔ Patent Book & page  
**Where Survey is Copied: Book C57; page 178 !!**



E – I now look for Thomas Junk under Fayette county in the Warrantee Registers

<http://www.phmc.state.pa.us/bah/dam/rg/di/r17-88WarrantRegisters/r17-88AllCountiesInterface.htm>

Warrant Registers – Main Page

o Under Fayette county

<http://www.phmc.state.pa.us/bah/dam/rg/di/r17-88WarrantRegisters/FayettePages/r17-88FayettePageInterface.htm>

o Under Surnames beginning with 'J' ... I look for Date of Warrant: Feb 1, 1796

Thomas Junk → page 32; under Date of Warrant: Feb 1, 1796

<http://www.phmc.state.pa.us/bah/dam/rg/di/r17-88WarrantRegisters/FayettePages/Fayette32.pdf>

No. of Warrant.	NAME OF WARRANTEE.	DENTY- TYPE OF WARRANT.	QUANTITY.	DATE OF WARRANT.	DATE OF RETURN.	ACRES RETURNED.	NAME OF PATENTEE.	Where Released.		Where Recd. is Copied.	
								Vol.	Page.	Book.	Page.
73	Junk, Thomas		166.	1 Feby. 1796	14 April 1798	186.21	Thomas Junk	32	577	125	

Warrantee: Thomas Junk

Date of Warrant: 1 Feb 1796

County: Fayette – Union

Patentee: Thomas Junk

Where Recorded: Book P32; pg 577

**Where Survey is Copied: Book C96; page 125 !!**

F – I go to Copied Survey Books and look up Book C96; page 125 and find the survey map.

<http://www.phmc.state.pa.us/bah/dam/rg/di/r17-114CopiedSurveyBooks/r17-114MainInterfacePage.htm>

PA State Archives - RG-17 - Copied Survey Images - Main Interface

o Vol C96

<http://www.phmc.state.pa.us/bah/dam/rg/di/r17-114CopiedSurveyBooks/Books%20C1-C234/Book%20C096/r17-114%20BookC-96%20Interface.htm>

o Vol C96 – Page 125 \*\* Survey Map \*\*

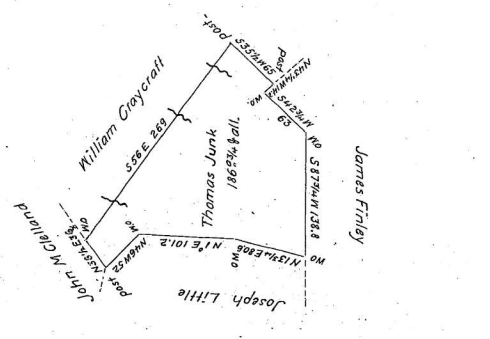
<http://www.phmc.state.pa.us/bah/dam/rg/di/r17-114CopiedSurveyBooks/Books%20C1-C234/Book%20C096/Book%20C-096%20pg%20249.pdf>

o Vol C96 – Page 125 reverse \*\* Survey Map \*\*

<http://www.phmc.state.pa.us/bah/dam/rg/di/r17-114CopiedSurveyBooks/Books%20C1-C234/Book%20C096/Book%20C-096%20pg%20250.pdf>



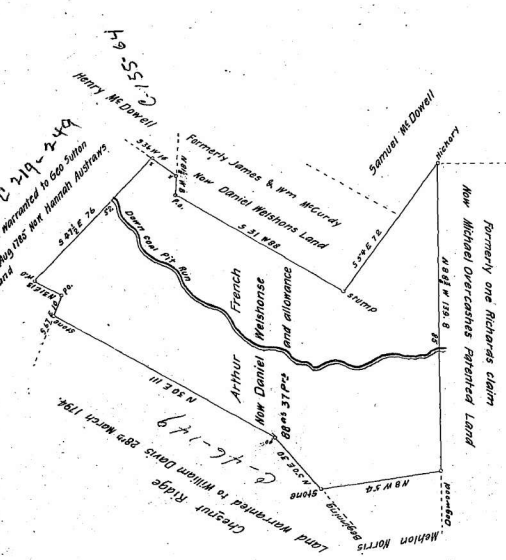




Draft of a tract of land containing Eighty-eight acres and thirty-seven Perches and allowance of six per cent for roads, &c. Situated in Ligonier Township, Fayette County and surveyed the 15th day of February 1786. In pursuance of a Warrant dated the 1st day of February 1786. To Daniel Brodhead Esquire Surveyor General.

IN TESTIMONY that the above is a copy of the original remaining on file in the Department of Internal Affairs of Pennsylvania, made conformably to an Act of Assembly approved the 16th day of February, 1833, I have hereunto set my Hand and caused the Seal of said Department to be affixed at Harrisburg, this fourth day of October 1904.

Jacob M. Campbell Esquire  
Surveyor General of Pennsylvania



Draft of a tract of land containing Eighty-eight acres and thirty-seven Perches and allowance of six per cent for roads, &c. Situated in Ligonier Township, Fayette County and surveyed the 15th day of February 1786. In pursuance of a Warrant dated the 1st day of February 1786. To Daniel Brodhead Esquire Surveyor General.

IN TESTIMONY that the above is a copy of the original remaining on file in the Department of Internal Affairs of Pennsylvania, made conformably to an Act of Assembly approved the 16th day of February, 1833, I have hereunto set my Hand and caused the Seal of said Department to be affixed at Harrisburg, this fourth day of October 1904.

Jacob M. Campbell Esquire  
Surveyor General of Pennsylvania